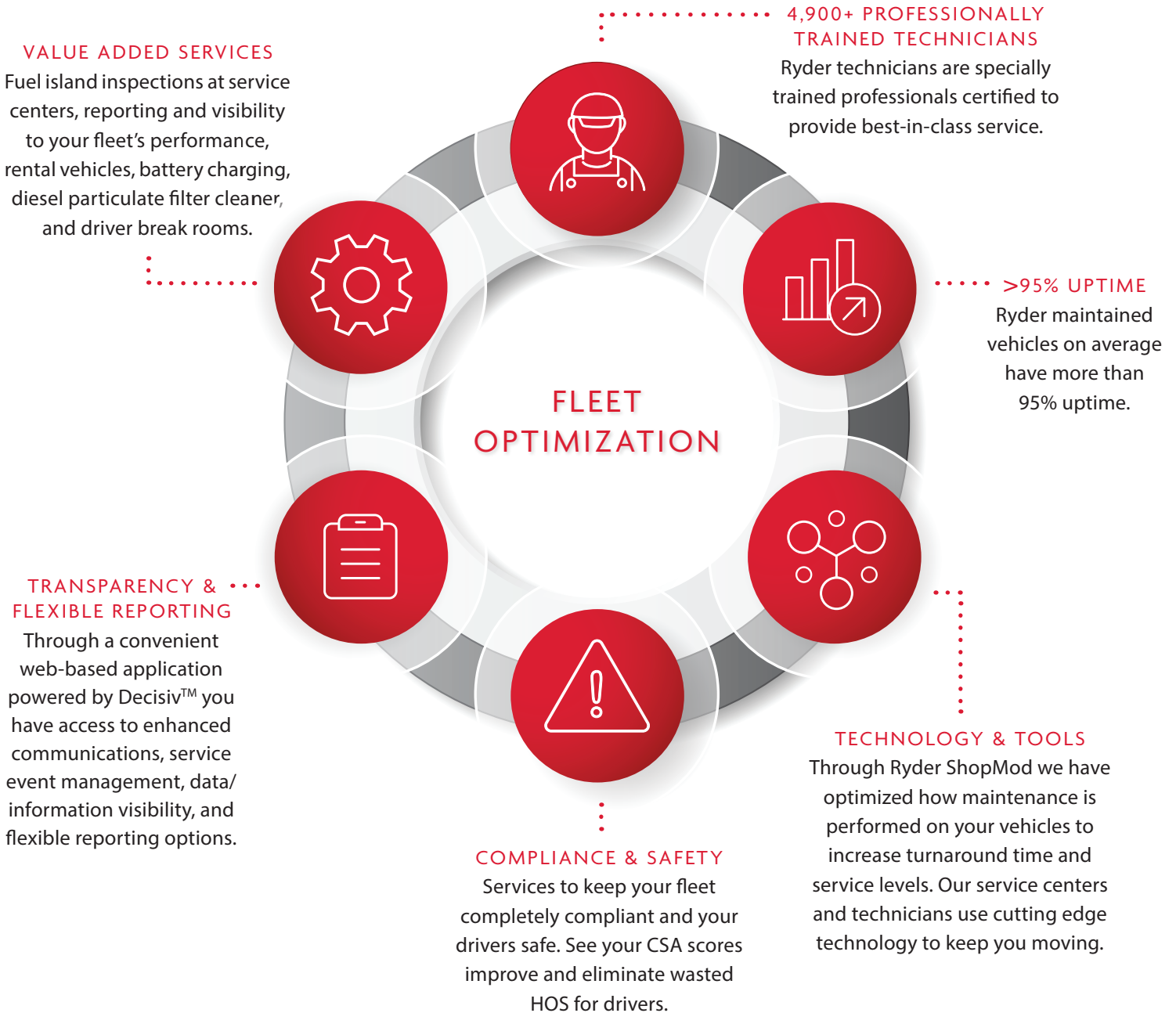


# How Ryder SelectCare Maintenance Increases Your Uptime

Whichever **Ryder SelectCare Maintenance** level of service—full service, preventive, or on-demand—you have the confidence of knowing that you have the best maintenance in the industry. Your fleet is supported by certified technicians and the most up-to-date diagnostic and repair technology in the industry. The result maximizes your fleet's uptime.



Discover how Ryder SelectCare Maintenance can work for you. Call **800-793-3765** or visit **ryder.com**.